



TOWN OF
CARBONDALE

Trash & Recycling **UPDATE**

Enroll NOW!
Sign up June 3 - 28

HOW TO ENROLL:

Online

carbondailegov.org/trash

Office

511 Colorado Ave
Weekdays: 9 AM-4 PM

At Pop-Up Events

June 4	City Market	12-1 PM
June 7	First Friday	5-6:30 PM
June 10	City Market	5-6 PM
June 11	Carbondale Library	12-1 PM

The Town of Carbondale is overhauling residential trash and recycling services within the town limits.

- Residents should assess service level needs and enroll with a desired service level selection anytime from **June 3-28, 2019**.
- Billing for trash and recycling pickup will be included on most residential monthly Town bills starting in September. New services start **October 1, 2019**.
- Customers who do not contact the Town to select a service level will default to the medium trash with medium recycling option.
- **More details and FAQs are available at carbondailegov.org/trash**

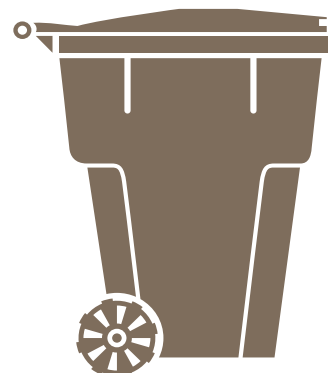
CHOOSE THE RIGHT SIZE CONTAINERS

There are several size combinations, and options to meet your specific needs.

See details on back.



SMALL



MEDIUM
(Default Service)



LARGE



MEDIUM
(Default Service)



LARGE

With your help, this change will be an opportunity for our community to:

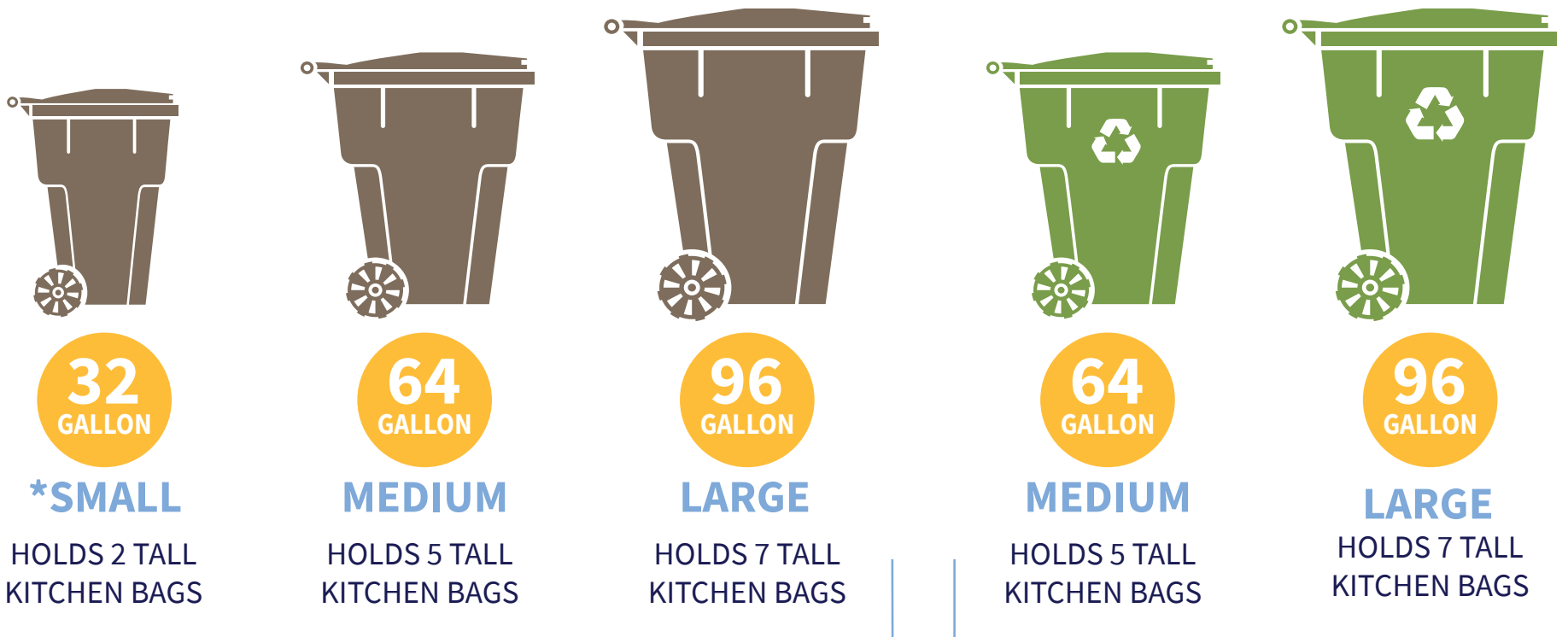
- Reduce the impact of trash hauling services on our streets
- Do our part to reduce the amount of trash going into landfills
- Decrease wildlife interactions associated with trash set-outs

*The less
you waste,
the less
you spend.*

CHOOSE THE RIGHT SIZE CONTAINER

RESIDENTIAL TRASH AND RECYCLING SERVICE LEVELS AND PRICING

All service levels include recycling. The customer can choose between Medium and Large recycling levels.



TRASH SERVICE LEVELS

***Super Saver:** The Super Saver is equivalent to half of the Small service level. It would accommodate approximately two (2) tall kitchen garbage bags every two weeks. The contractor will provide a 32-gallon trash container that will be **picked up every-other week**.

Small: The Small service level would be able to accommodate approximately two (2) tall kitchen garbage bags every week. The contractor will provide a 32-gallon trash container that will be **picked up every week**.

Medium: The Medium service level would be able to accommodate approximately five (5) tall kitchen garbage bags every week. The contractor will provide a 64-gallon container that will be **picked up every week**.

Large: The Large service level would be able to accommodate approximately seven (7) tall kitchen garbage bags every week. The contractor will provide a 96-gallon container that will be **picked up every week**.

SERVICE LEVEL OPTIONS & PRICING

SINGLE FAMILY	MONTHLY COST
Super Saver Trash with Medium Recycling	\$ 13.84
Super Saver Trash with Large Recycling	\$ 15.93
Small Trash with Medium Recycling	\$ 16.92
Small Trash with Large Recycling	\$ 19.74
Medium Trash with Medium Recycling (Default Service Level)	\$ 30.46
Medium Trash with Large Recycling	\$ 35.53
Large Trash with Medium Recycling	\$ 45.24
Large Trash with Large Recycling	\$ 51.52
Additional Medium Trash or Additional Medium Recycling	\$ 14.10
Additional Large Trash or Additional Large Recycling	\$ 17.63
* Add Wildlife Resistant Trash Containers	\$ 11.75

MULTI FAMILY RESIDENCES

HOA and Property Managers please contact Town at 970-510-1202 to find out how you fit into this change.

RECYCLING SERVICE LEVELS

Medium: The Medium recycling service level is a 64-gallon recycling container **picked up every-other week**.

Large: The Large recycling service level is a 96-gallon container **picked up every-other week**.

WILDLIFE RESISTANT TRASH CONTAINERS

Wildlife resistant trash containers will be available for all service levels. Since wildlife resistant trash containers are only available in 64 and 96-gallon sizes, wildlife resistant Super Saver service level will be a 64-gallon trash container **collected once per month** and the wildlife resistant Small service level will be a 64-gallon trash container **collected every-other week**.

EXTRA TRASH AND RECYCLING CONTAINERS

Additional medium and large trash and recycling containers are available, but to get an additional container, the customer must first be at the Large service level for the type of extra container they want (i.e. extra trash only available to customers with Large trash service, extra recycling only available to customers with Large recycling service).

Questions?

970-510-1202

carbondalegov.org/trash

trash@carbondaleco.net

The less you waste, the less you spend.